



Wall-mounted Pt100 temperature sensor

7411C

- Accuracy, IEC 60751 class A
- Red-lacquered lightweight metal housing
- Protection tube $\varnothing 6 \times 80$ mm
- Ambient temperature range -40°C to $+80^{\circ}\text{C}$

Application

- Temperature measurement in general work, industrial and storage facilities as well as cold and freezing rooms.

Technical characteristics

- The sensor element is a thin film platinum resistor - Pt100 - in compliance with the standard IEC 60751 DIN class A.
- The protecting tube measures $\varnothing 6 \times 80$ mm. It is made of stainless, acid-proof steel W No. 1.4571/ AISI 316Ti.
- The terminal head is produced of lightweight metal and protected against corrosion through industrial lacquering.

Electrical connection

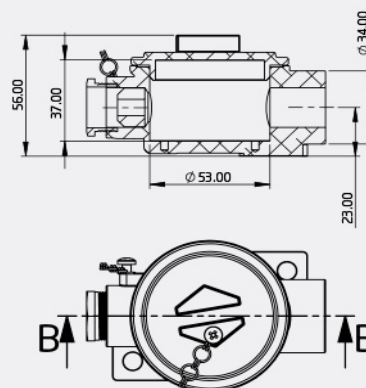
- The sensor is delivered with a 4-wire connection.

Option

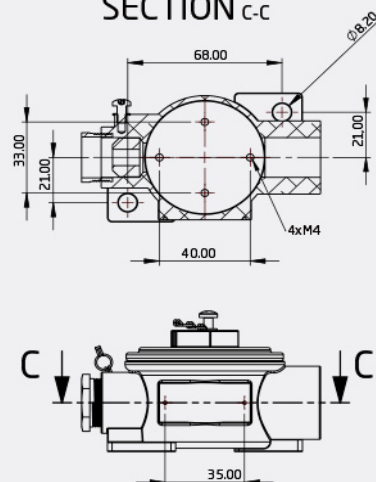
- The Pt100 temperature sensor type 7411C can be delivered with an integrated 2-wire universal temperature transmitter type 5331, 5332, 5333, 5335, 5337 or 5437.

Applications

SECTION B-B



SECTION C-C



Environmental Conditions

Protection degree..... IP67

Mechanical specifications

Protection tube..... Ø 6 mm

Sensor length..... 80 mm

Interior diameter..... Ø 53 x 34 mm

Cable connection (screwed)..... M20 x 1.5

Common specifications

Recommended sensor current..... ≤ 2 mA

Max. temperature deviation
at 0°C..... ≤ ±0.15°C

Accuracy..... IEC 60751, Class A