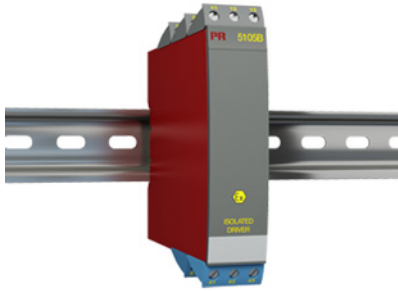


Ex-isolated driver



5105B

- 1- or 2-channel version
- 3- / 5-port 3.75 kVAC galvanic isolation
- Driver for Ex / I.S. area
- 20 programmable measurement ranges
- Universal supply by AC or DC



Application

- Safety barrier for current signals transmitted to I/P converters and displays mounted in hazardous area.
- Safety barrier for analog current / voltage signals transmitted to hazardous area.
- 1 : 1 or signal conversion of analog current / voltage signals.

Technical characteristics

- The 20 factory-calibrated measurement ranges in the 5105B can be selected by the internal DIP-switches without the need for a recalibration. Special measurement ranges can be delivered.
- PR5105B is based on microprocessor technology for gain and offset. The analog signal is transmitted at a response time of less than 25 ms.
- Inputs, outputs, and supply are floating and galvanically separated.

Mounting / installation

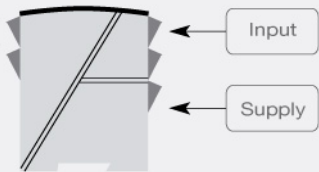
- Mounted vertically or horizontally on a DIN rail. By way of the 2-channel version up to 84 channels per meter can be mounted.

Note

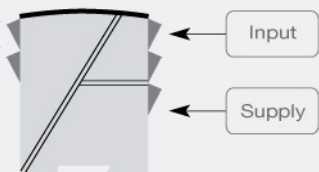
- Not suitable for new installations requiring certification to the latest ATEX standards - see ATEX certificate DEMKO 99ATEX126014 and EU Declaration of Conformity for details.

Applications

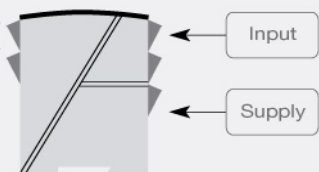
I / P Converter



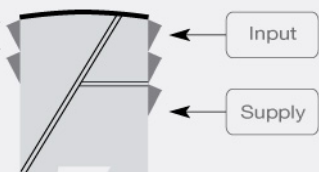
Display



Current, mA



Voltage



Order:

Type	Input	Output	Channels
5105B	0...20 mA : A	Special : 0	Single : A
	4...20 mA : B	0...20 mA : 1	Double : B
	0...10 V : E	4...20 mA : 2	
	2...10 V : F	0...1 V : 4	
	Special : X	0.2...1 V : 5	
		0...10 V : 6	
		2...10 V : 7	

Environmental Conditions

Operating temperature.....	-20°C to +60°C
Calibration temperature.....	20...28°C
Relative humidity.....	< 95% RH (non-cond.)
Protection degree.....	IP20

Mechanical specifications

Dimensions (HxWxD).....	109 x 23.5 x 130 mm
Weight approx.....	225 g
DIN rail type.....	DIN EN 60715/35 mm
Wire size.....	0.13...2.08 mm ² AWG 26...14 stranded wire
Screw terminal torque.....	0.5 Nm
Vibration.....	IEC 60068-2-6
2...13.2 Hz.....	±1 mm
13.2...100 Hz.....	±0.7 g

Common specifications**Supply**

Supply voltage, universal.....	21.6...253 VAC, 50...60 Hz or 19.2...300 VDC
Fuse.....	400 mA SB / 250 VAC
Max. required power.....	≤ 2 W (2 channels)
Internal power dissipation.....	≤ 2 W (2 channels)

Isolation voltage

Isolation voltage, test / working.....	3.75 kVAC / 250 VAC
PELV/SELV.....	IEC 61140

Response time

Response time (0...90%, 100...10%).....	< 25 ms
Signal / noise ratio.....	Min. 60 dB (0...100 kHz)
Accuracy.....	Better than 0.1% of sel. range
EMC immunity influence.....	< ±0.5% of span
Extended EMC immunity: NAMUR NE21, A criterion, burst.....	< ±1% of span

Input specifications**Common input specifications**

Max. offset.....	20% of max. value
------------------	-------------------

Current input

Measurement range.....	0...20 mA
Min. measurement range (span).....	16 mA
Input resistance.....	Nom. 10 Ω + PTC 10 Ω

Voltage input

Measurement range.....	0...10 VDC
Min. measurement range (span).....	8 VDC
Input resistance.....	> 2 MΩ

Output specifications**Current output**

Signal range.....	0...20 mA
Min. signal range.....	16 mA
Load (@ current output).....	≤ 770 Ω
Load stability.....	≤ 0.01% of span / 100 Ω
Current limit.....	≤ 28 mA

Voltage output

Signal range.....	0...1 VDC / 0...10 VDC
Min. signal range.....	0.8 VDC / 8 VDC
Load (@ voltage output).....	≥ 500 kΩ
of span.....	= of the presently selected range

Observed authority requirements

EMC.....	2014/30/EU
LVD.....	2014/35/EU
EAC.....	TR-CU 020/2011

Approvals

ATEX.....	DEMKO 99ATEX126014, II (1) GD [Ex ia] IIC
c UL us, UL 913.....	E233311
DNV Marine.....	TAA0000101
EAC Ex.....	EAEU KZ 7500361.01.01.08756